

### 1\_3 HOW TO USE "SELECTION SET" TO IMPORT PLAN GRAPHICS

#### Question:

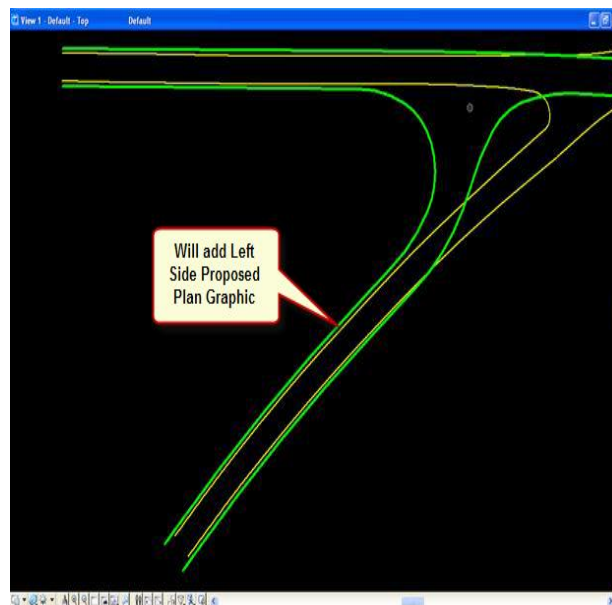
If using Selection Set do you still have to pick the correct search range for template points?

#### Answer:

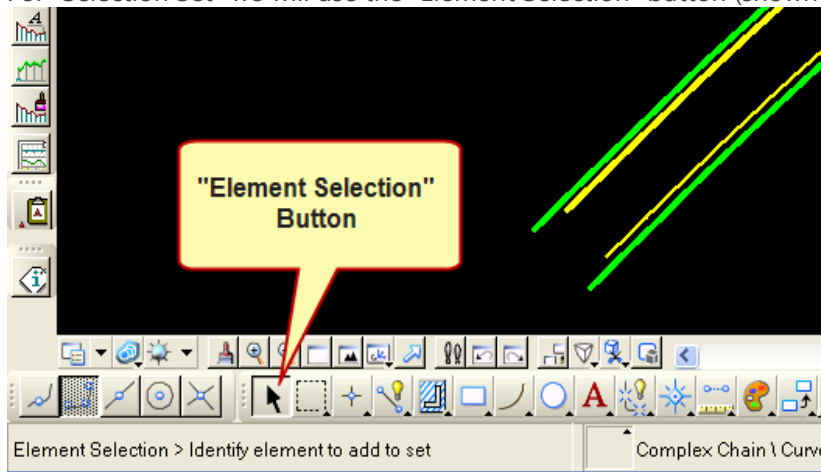
The option "Selection Set" (Plan Graphics - Corridor Modeling dialog window) does not use a search range, it allows you to actually "Select" the plan graphic. Here's an example how to use Selection Set:

#### How to Use "Selection Set" to Import Plan Graphics

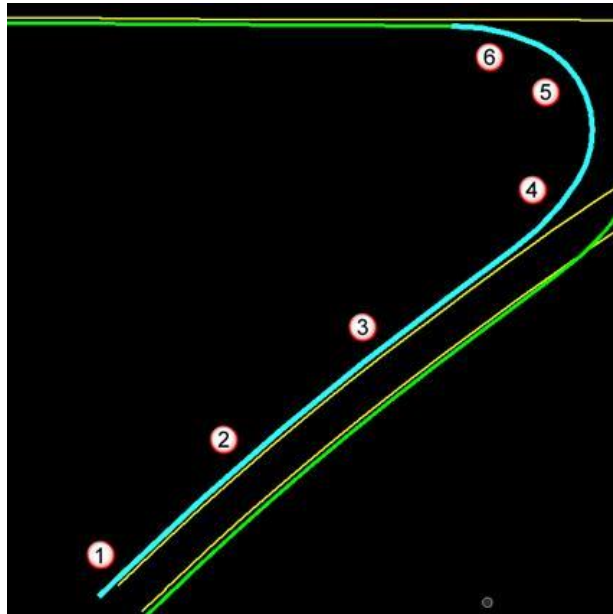
1. Will start off adding the Left Side Proposed EOT plan graphic (shown below).



2. For "Selection Set" we will use the "Element Selection" button (shown below).



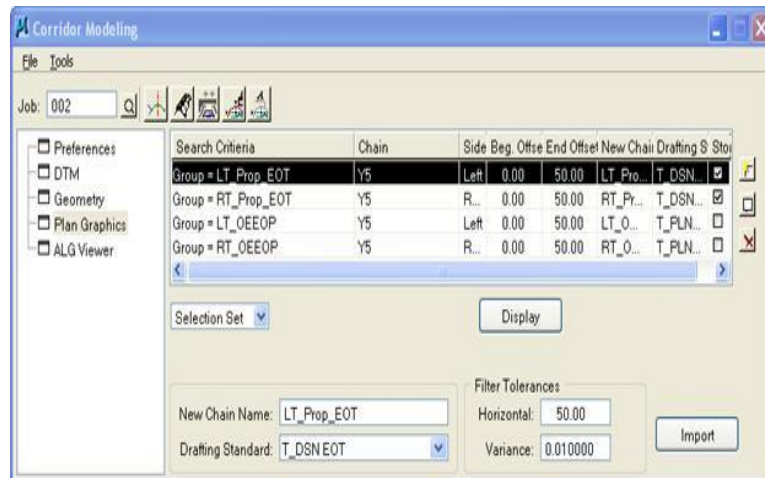
- While holding down the "Ctrl Button" click on "Element Section" and select each segment of the left side (shown in blue below).



- Under "Corridor Modeling Dialog / Plan Graphics" select "Selection Set" (drop-down menu).
- Type in "New Chain Name" & "Drafting Standard" (shown below).



- Click  to add to list.



- Repeat this process to add "Right Side Proposed EOT" Plan Graphics.
- When finished, select "Import" to import Plan Graphics.